

8

7

6

5

4

3

2

1

8

7

6

5

4

3

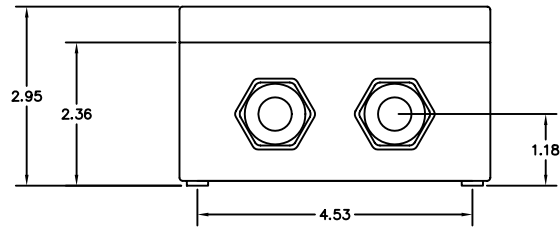
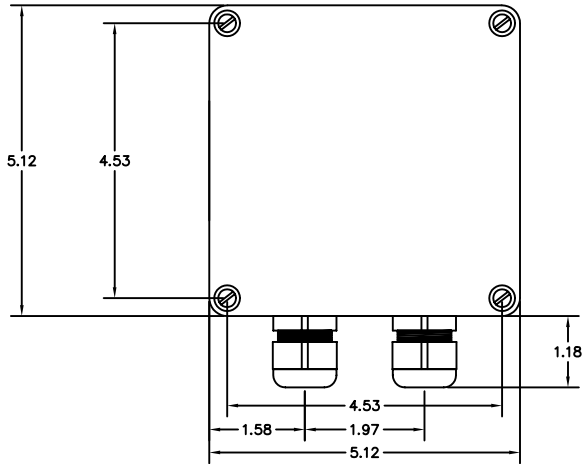
2

1

NOTES:

- 1. ENCLOSURE TYPE:
WEATHERPROOF, IP66(NEMA 4X), LIGHT GRAY, POLYSTYRENE ENCLOSURE. REMOVEABLE COVER WITH SELF RETAINING SCREWS.
- 2. CABLE GLAND GRIP RANGE: 0.230-0.530 INCHES
- 3. WEIGHT: 1 LB (0.45 Kg)
- 4. SUGGESTED MOUNTING HARDWARE: 8-32 SOCKET HEAD CAP SCREW.
MOUNTING HOLE ENCLOSURE THICKNESS: 0.188 INCH
MOUNTING HOLE SCREW HEAD MAX DIAMETER: 0.340 INCH
MOUNTING HOLES LOCATED UNDER EACH COVER SCREW (4 TOTAL).
- 5. INPUT VOLTAGE BASED ON PART NUMBER AS FOLLOWS:
P/N 04-02000-1 230 VAC, 50/60 Hz, 1 PHASE
P/N 04-02000-2 115 VAC, 50/60 Hz, 1 PHASE

REVISIONS			
REV	DESCRIPTION	DATE	APPROVED



QTY	REV	U of M	PART NUMBER OR IDENTIFYING NUMBER	CAGE CODE	DESCRIPTION

PARTS LIST	
MATERIAL	UNLESS OTHERWISE SPECIFIED ALL DIMENSIONS ARE IN INCHES AND INCLUDE APPLIED FINISH
FINISH	INTERPRET DRAWING PER ANSI Y14.5M-1994
	DRAWN BY BCS ZDMARD
	APPD ENG BCS ZDMARD
	APPD MFG
	CHECKED
	APPD
	ANGLE ±
	HOLE DIAMETERS PER ANSI/ASME REPEATING WORK-SUMMATIVE
	NEXT ASSY: WHC1
	USED ON WHC1
PARENTHERTICAL INFORMATION FOR REFERENCE ONLY.	

 BRAIDSHAW COMMUNICATION SYSTEMS DUNWOODY, GEORGIA	OUTLINE MOUNTING, WHC1
SIZE: D CAGE CODE: BCS DWG NO: 04-02000-1	DRAWING NO.: OMD-WHC1 SCALE: 1=1 SHEET 1 of 1